



## CorePro LED PLC 2P

### CorePro LED PLC 6.5W 840 2P G24d-2

CorePro LED PLC 2P integrates a LED light source into a traditional fluorescent form factor. This product is the ideal solution for uplamping in general lighting applications: it meets basic lighting requirements, offers significant energy savings, and is environmentally friendly.

#### Product data

General Information		Warm Up Time to 60% Light (Nom)	
Cap-Base	G24D-2 [ G24d-2]	Power Factor (Nom)	0.9
EU RoHS compliant	Yes	Voltage (Nom)	220-240 V
Nominal Lifetime (Nom)	30000 h	<b>Temperature</b>	
Switching Cycle	50000X	T-Ambient (Max)	35 °C
<b>Light Technical</b>		T-Ambient (Min)	-20 °C
Color Code	840 [ CCT of 4000K]	T-Storage (Max)	65 °C
Beam Angle (Nom)	120 °	T-Storage (Min)	-40 °C
Luminous Flux (Nom)	700 lm	T-Case Maximum (Nom)	65 °C
Color Designation	Cool White (CW)	<b>Controls and Dimming</b>	
Correlated Color Temperature (Nom)	4000 K	Dimmable	No
Luminous Efficacy (rated) (Nom)	92.31 lm/W	<b>Mechanical and Housing</b>	
Color Consistency	<6	Product Length	100 mm
Color Rendering Index (Nom)	83	<b>Approval and Application</b>	
LLMF At End Of Nominal Lifetime (Nom)	70 %	Energy Efficiency Label (EEL)	A+
<b>Operating and Electrical</b>		Energy Saving Product	Yes
Input Frequency	50 to 60 Hz	Approval Marks	TUV CE marking RoHS compliance KEMA Keur certificate
Power (Nom)	6.5 W		
Lamp Current (Max)	35 mA		
Lamp Current (Min)	25 mA		
Starting Time (Nom)	0.5 s		

## CorePro LED PLC 2P

Energy Consumption kWh/1000 h	9 kWh
<b>Product Data</b>	
Full product code	871869654129600
Order product name	CorePro LED PLC 6.5W 840 2P G24d-2
EAN/UPC - Product	8718696541296
Order code	929001201502

Numerator - Quantity Per Pack	1
Numerator - Packs per outer box	10
Material Nr. (12NC)	929001201502
Net Weight (Piece)	0.077 kg

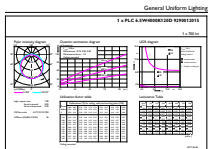
## Dimensional drawing



Product	D1	D2	A1	A2	A3
CorePro LED PLC 6.5W 840 2P G24d-2	24.3 mm	28.4 mm	105.8 mm	125 mm	147.6 mm

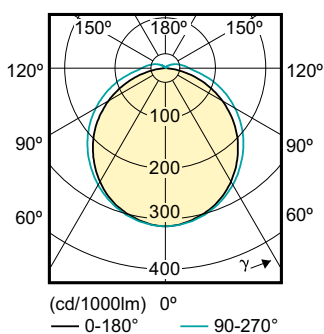
## LEDtube PLC 6.5W G24d-2/840 2P

## Photometric data



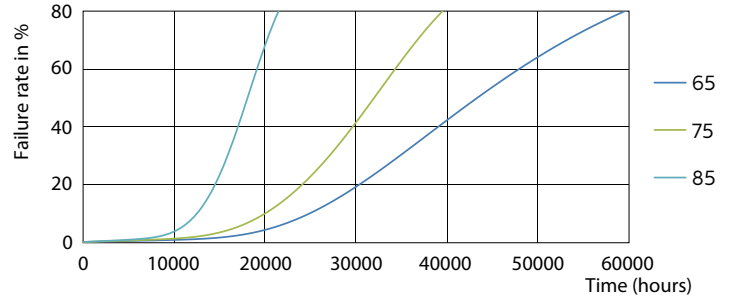
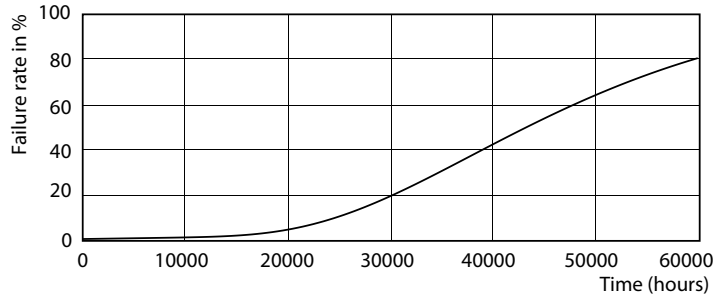
## LEDtube PLC 100mm 7W G24D-2 840 700lm

## LEDtube PLC 100mm 9W G24Q-3 840 1000lm

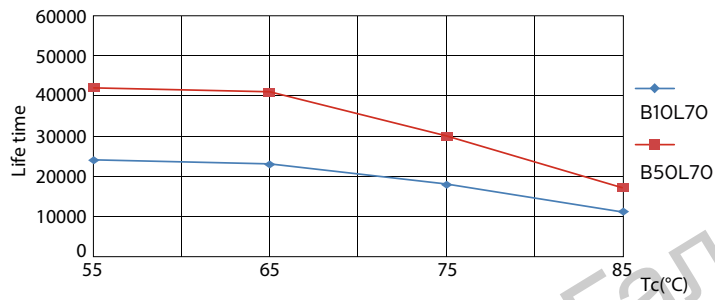


## CorePro LED PLC 2P

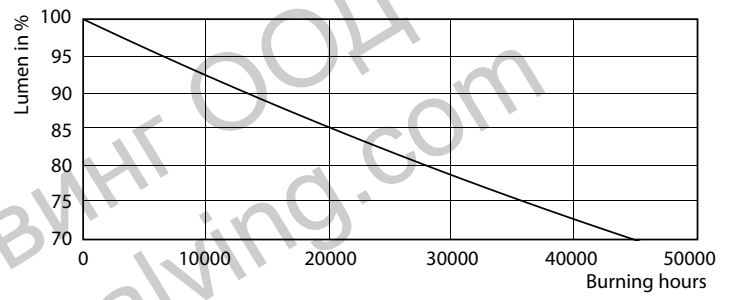
### Lifetime



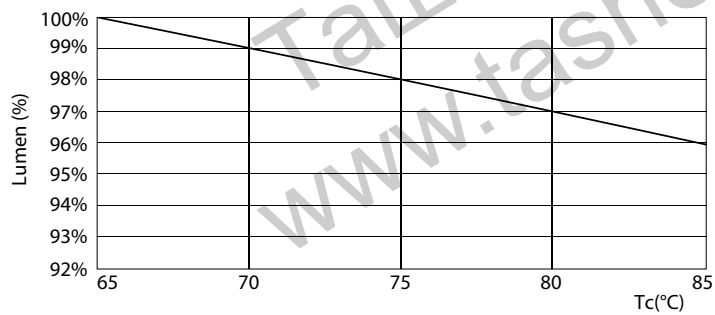
LEDtube PLC 100mm 7W G24D-2 830 650lm



LEDtube PLC 100mm 7W G24D-2 830 650lm



LEDtube PLC 100mm 7W G24D-2 830 650lm



LEDtube PLC 100mm 7W G24D-2 830 650lm

LEDtube PLC 100mm 7W G24D-2 830 650lm